



Advisory Panel 4: Public Health, Safety, & Logistics

Meeting Slides

November 19, 2021

Community Benchmarks - Status

Benchmark (each measured over prior 14 days)	Status 10/2/21	Status 10/16/21	Status 10/30/21	Status 11/13/21
Avg. daily new case count in Brookline = <10 per 100k people	7.4	7.5	5.5	10.7
Avg. daily new case count in Mass. = <10 per 100k people	20.3	18.5	16.5	23.0
Avg. test positivity rate in Brookline = <5.0%	0.48%	0.58%	0.41%	0.69%
Avg. test positivity rate in Massachusetts = <5.0%	1.92%	1.83%	1.70%	2.26%

Panel 4 selected these four community transmission benchmarks in August 2020 as triggers for focused evaluation and discussion of whether changes in operations are warranted, not as definitive indicators of in-school risk or thresholds for automatic action. Research and PSB-specific data since that time have convincingly shown that in-school transmission risk can be kept very low even at high levels of community case incidence.

Data source: <https://www.mass.gov/info-details/covid-19-response-reporting>

MA DPH Color Scale



Incidence Rate Color Table
 Massachusetts Department of Public Health COVID-19 Dashboard - Thursday, November 12, 2020
Average Daily Incidence Rate per 100,000 Color Calculations

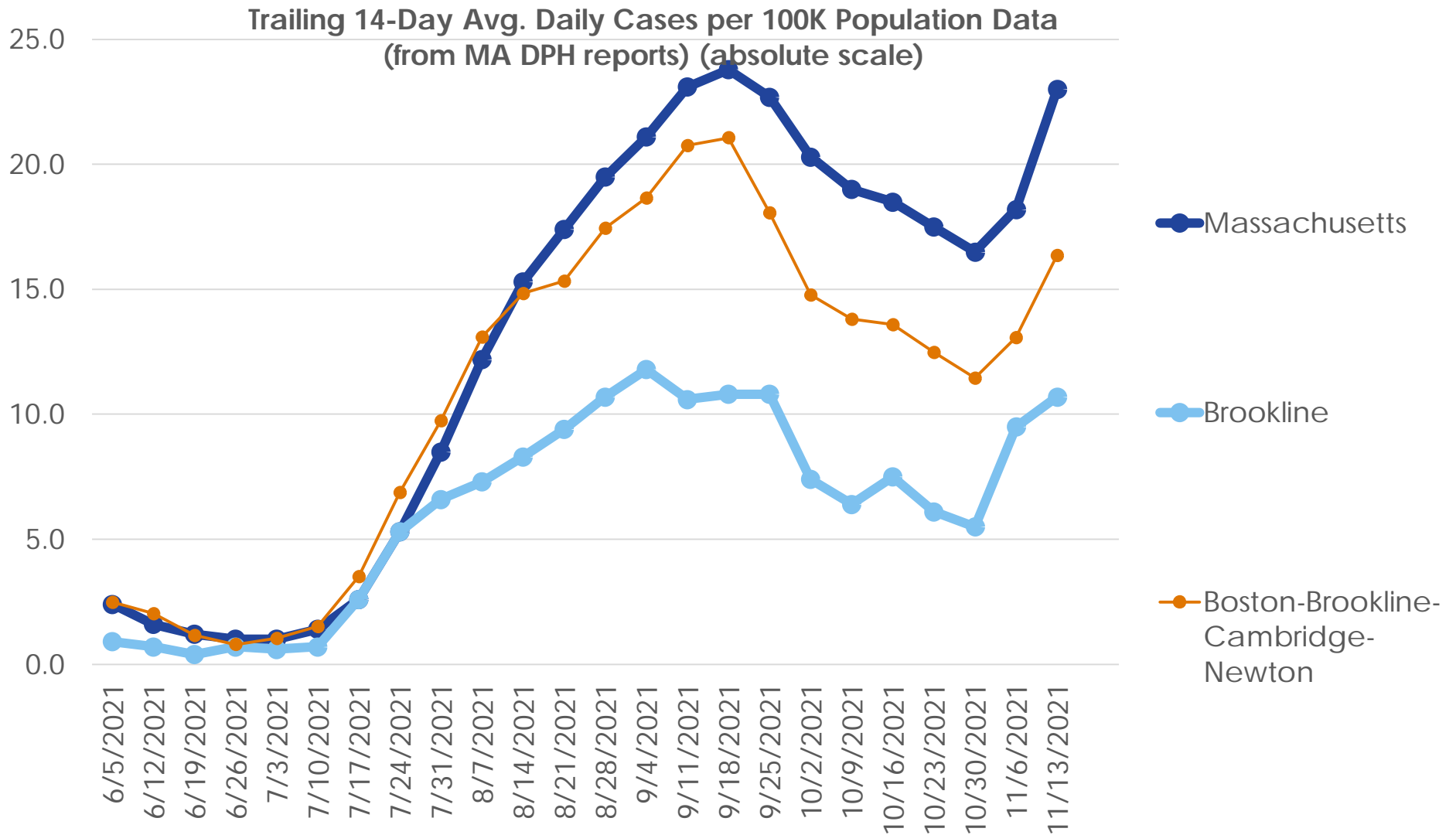
Group	Population		
	Under 10K	10K-50K	Over 50K
Grey	Less than or equal to 10 total cases	Less than or equal to 10 total cases	Less than or equal to 15 total cases
Green	Less than or equal to 15 total cases	<10 avg cases/100k AND >10 total cases	<10 avg cases/100k AND >15 total cases
Yellow	Less than or equal to 25 total cases	≥10 avg cases/100k OR ≥5% pos rate	≥10 avg cases/100k OR ≥ 4% pos rate
Red	More than 25 total cases	≥10 avg cases/100k AND ≥5% pos rate	≥10 avg cases/100k AND ≥4% pos rate

Brookline is here as of 11/13/21 (slightly yellow)

Brookline's population is ~63,000

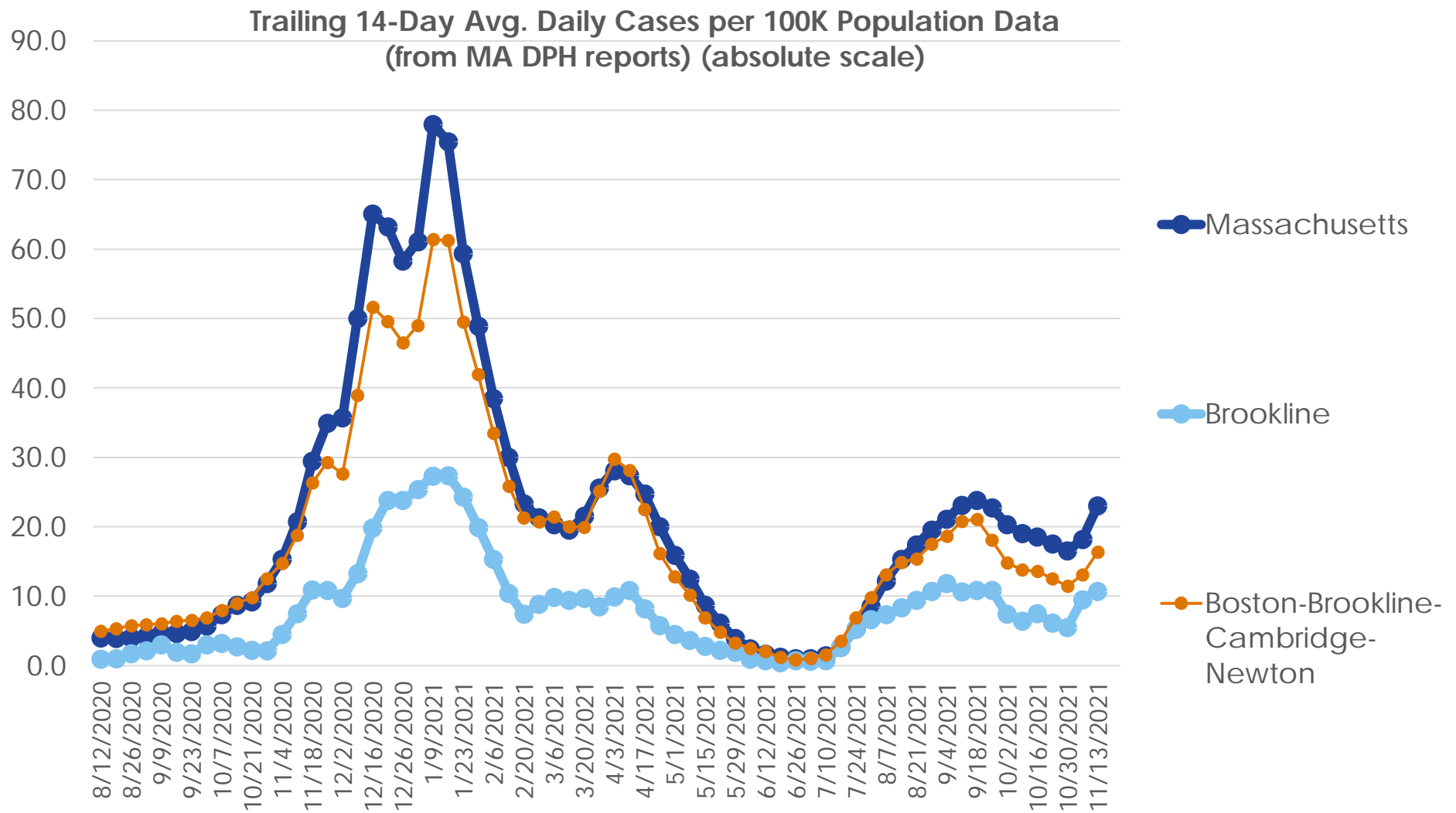
As of 11/5, DPH is using 2019 population estimates derived from a method developed by the University of Massachusetts Donahue Institute. The 2019 estimates are the most currently available data.

Trends: Avg. Daily New Cases per 100k



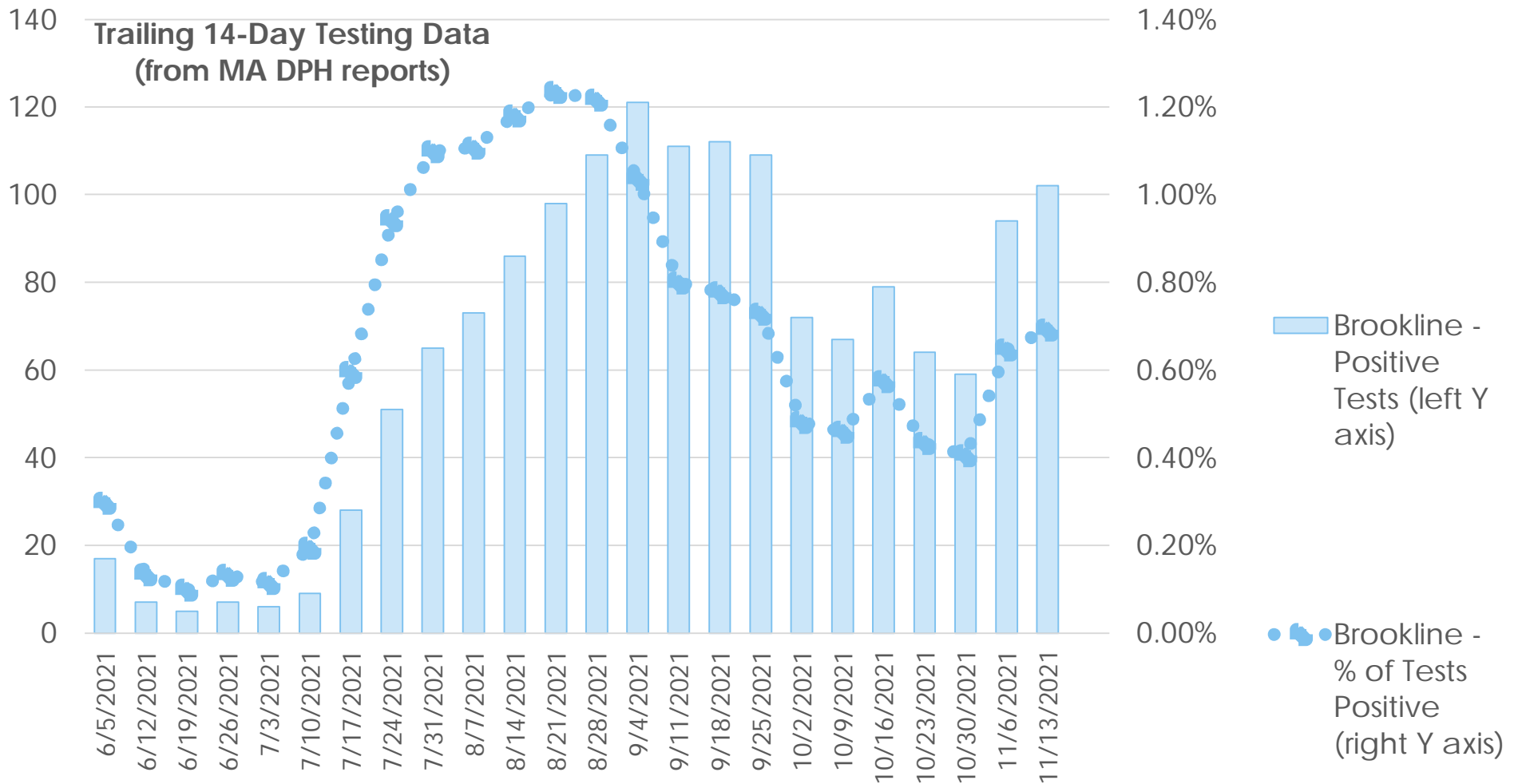
Data source: <https://www.mass.gov/info-details/covid-19-response-reporting>

Trends: Avg. Daily New Cases per 100k



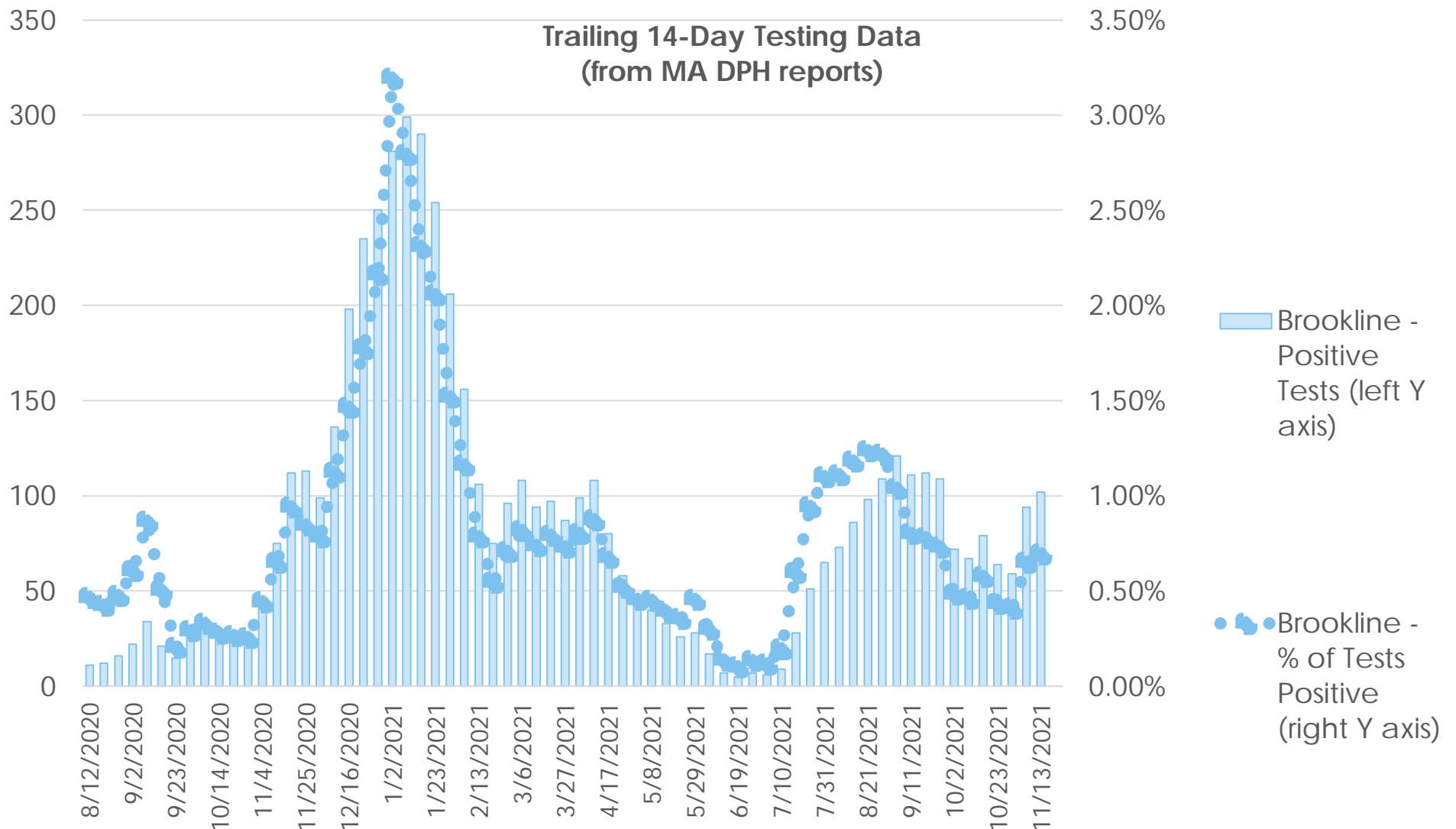
Data source: <https://www.mass.gov/info-details/covid-19-response-reporting>

Trends: Test Positivity (Brookline)



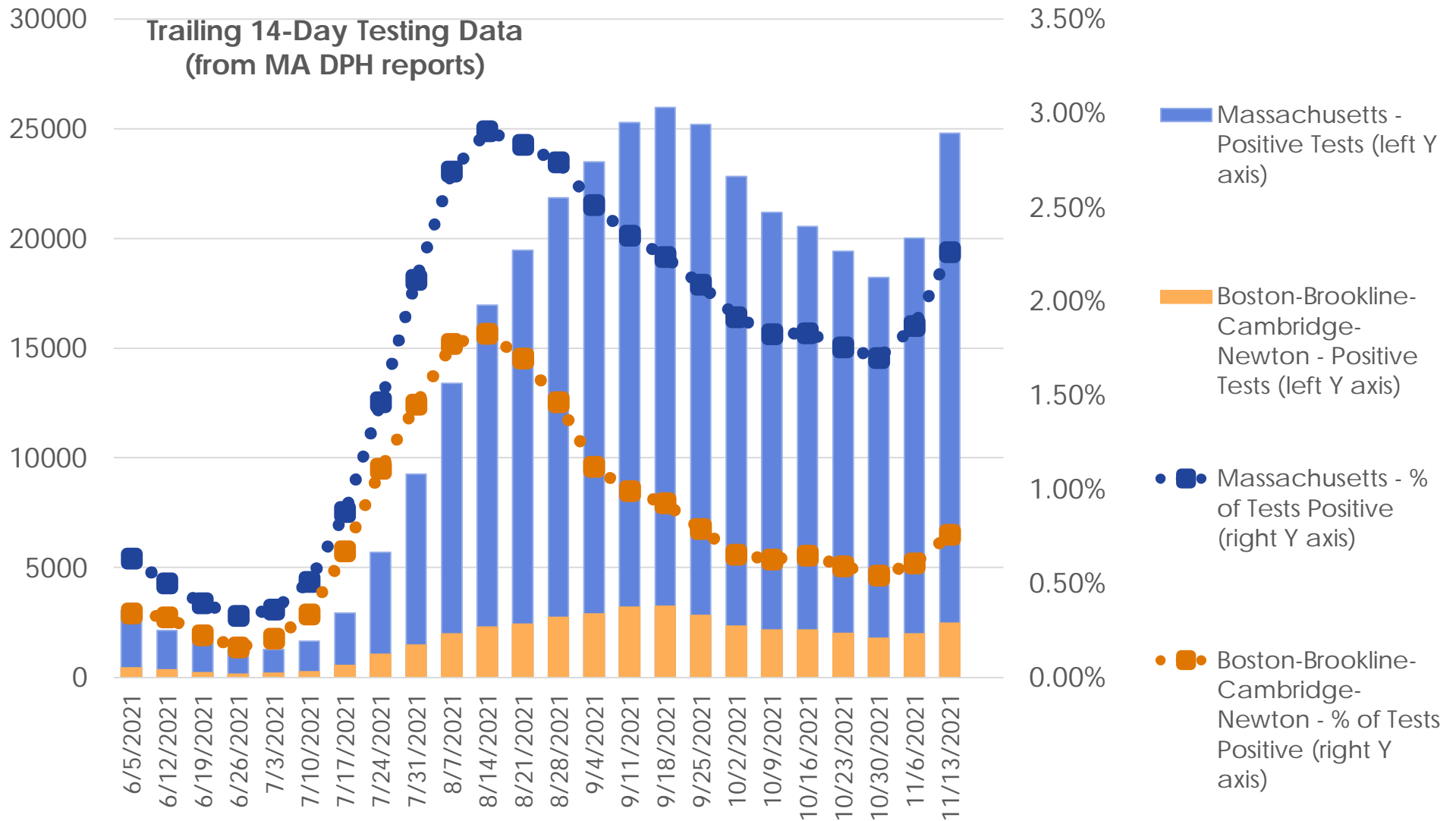
Data source: <https://www.mass.gov/info-details/covid-19-response-reporting>

Trends: Test Positivity (Brookline)



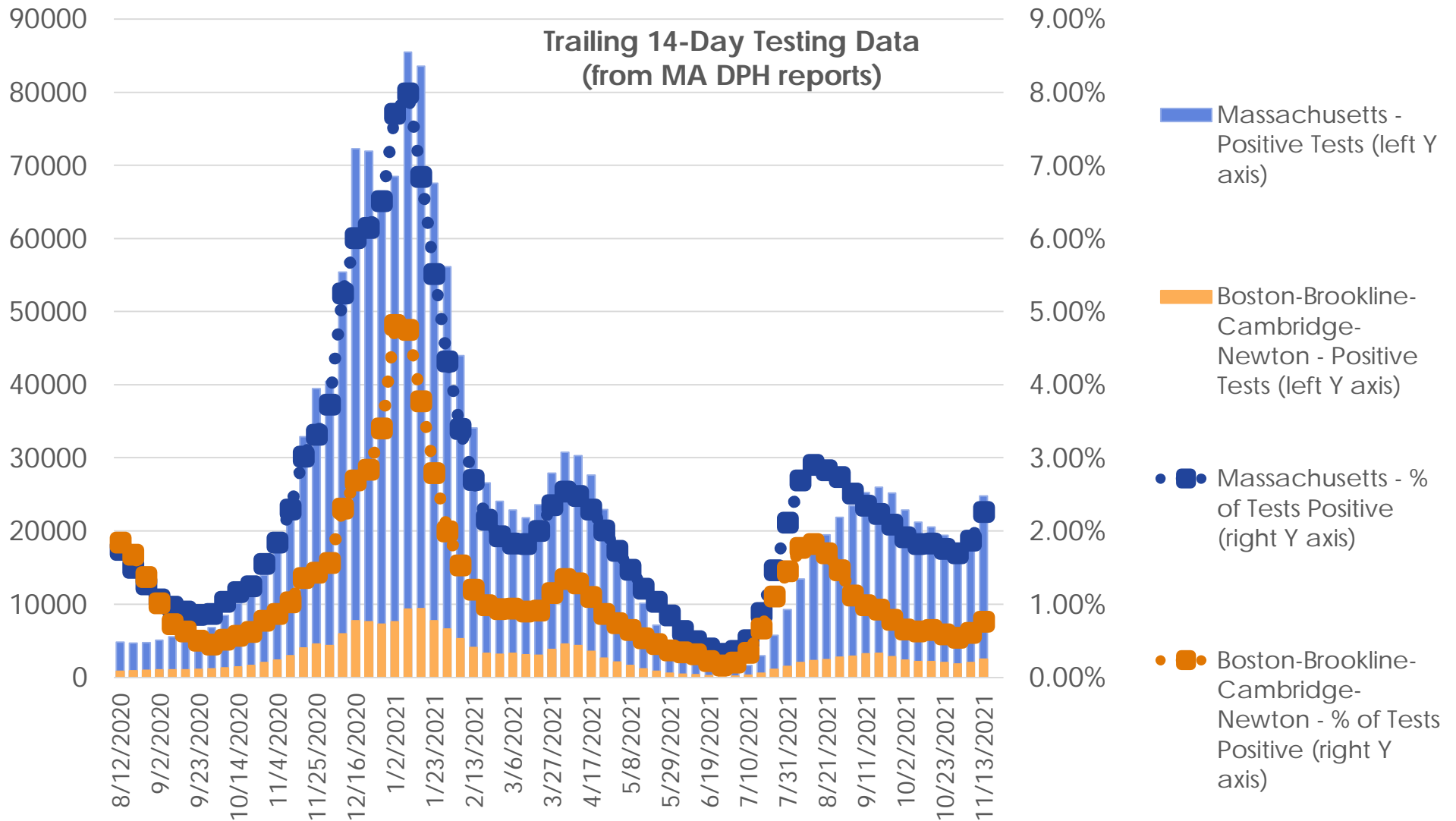
Data source: <https://www.mass.gov/info-details/covid-19-response-reporting>

Trends: Test Positivity (Statewide)



Data source: <https://www.mass.gov/info-details/covid-19-response-reporting>

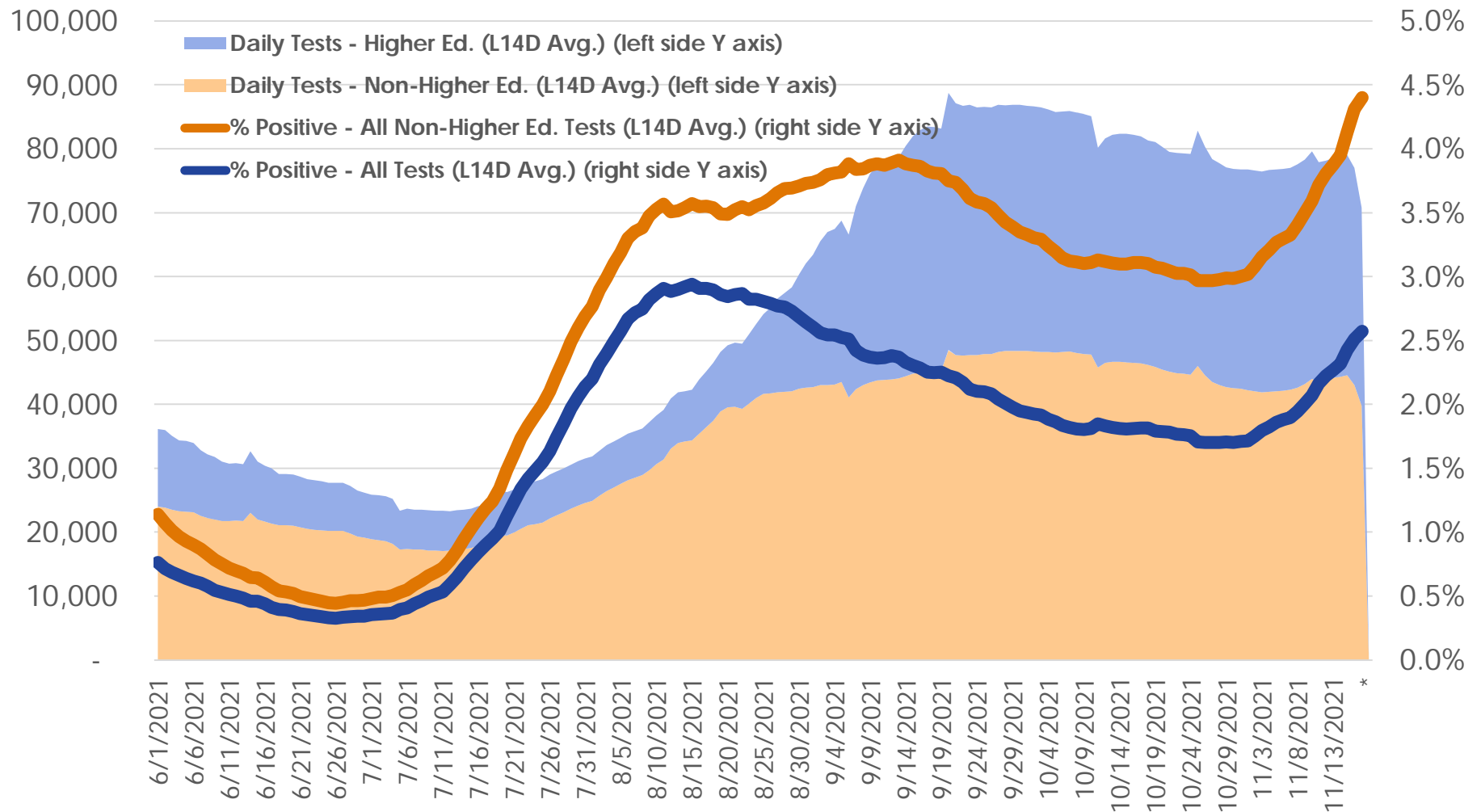
Trends: Test Positivity (Statewide)



Data source: <https://www.mass.gov/info-details/covid-19-response-reporting>

Trends: Test Positivity and Testing Volume (Statewide)

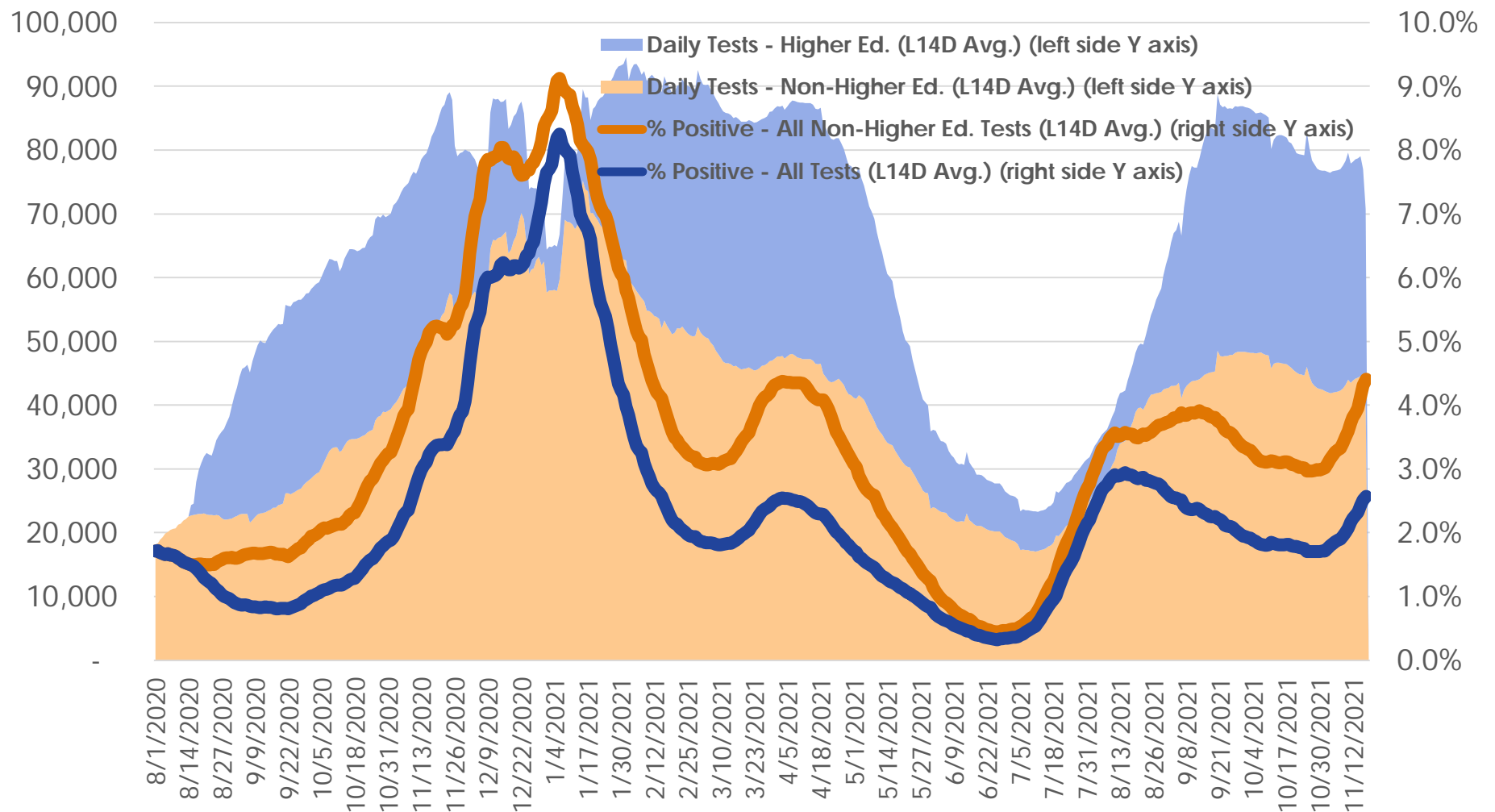
MA Statewide Test Positivity and Volume



Data source: <https://www.mass.gov/info-details/covid-19-response-reporting>

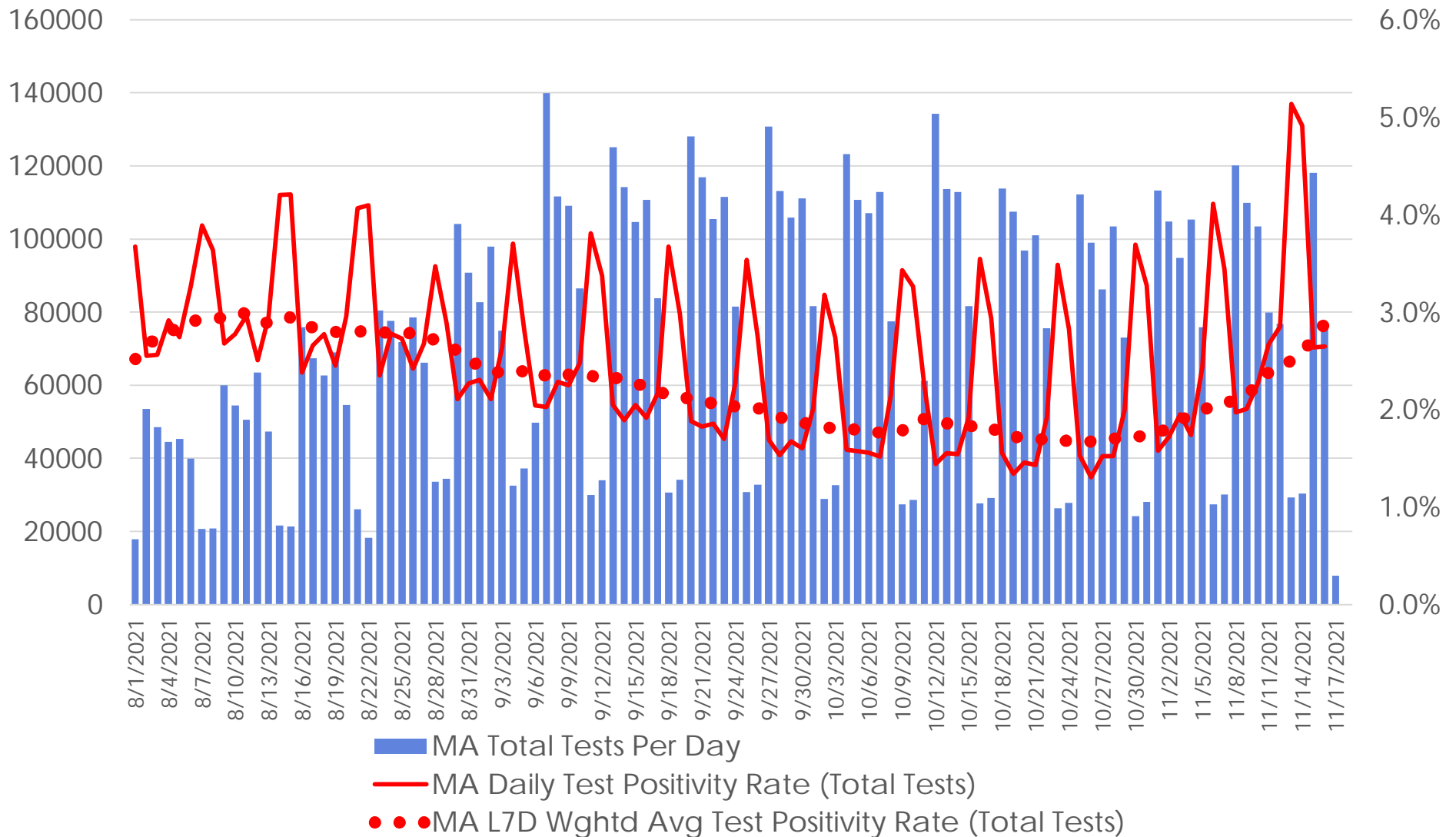
Trends: Test Positivity and Testing Volume (Statewide)

MA Statewide Test Positivity and Volume



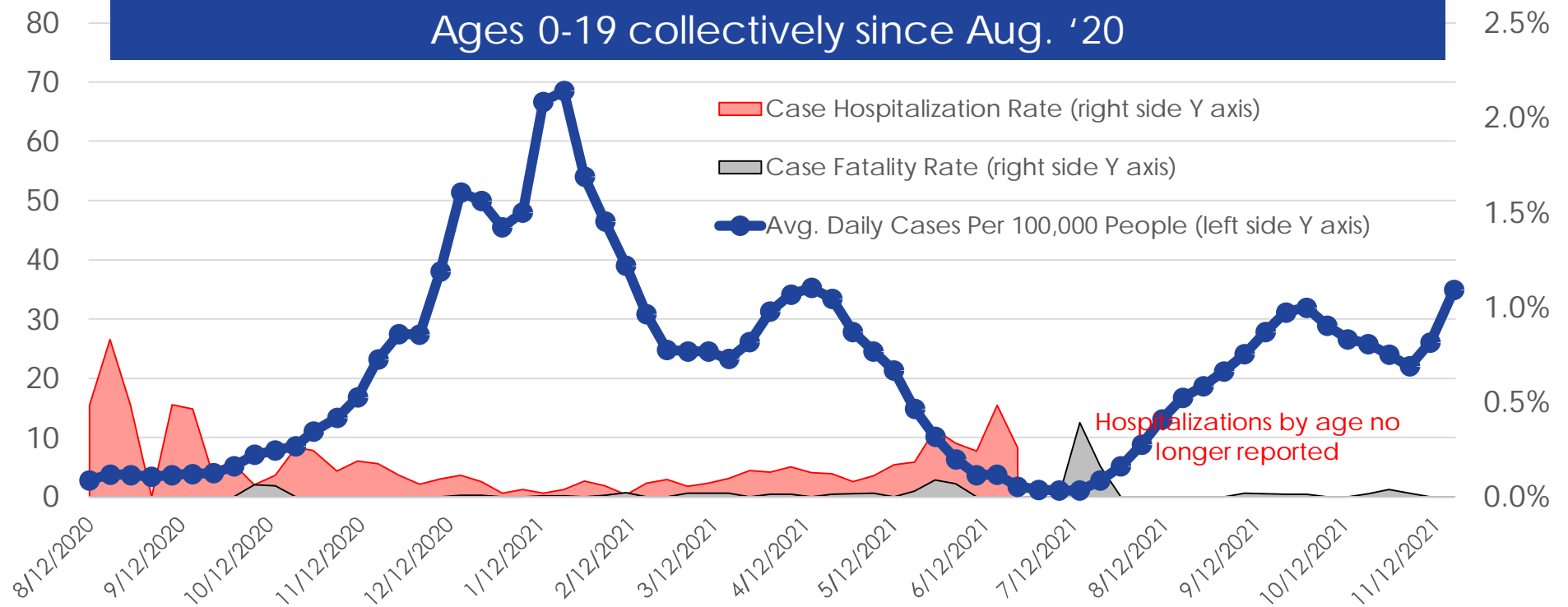
Data source: <https://www.mass.gov/info-details/covid-19-response-reporting>

Trends: Daily Test Volumes and Positivity (Statewide)



Data source: <https://www.mass.gov/info-details/covid-19-response-reporting>

Trends: 0-19 Year-Old Age Cohort (MA Statewide)

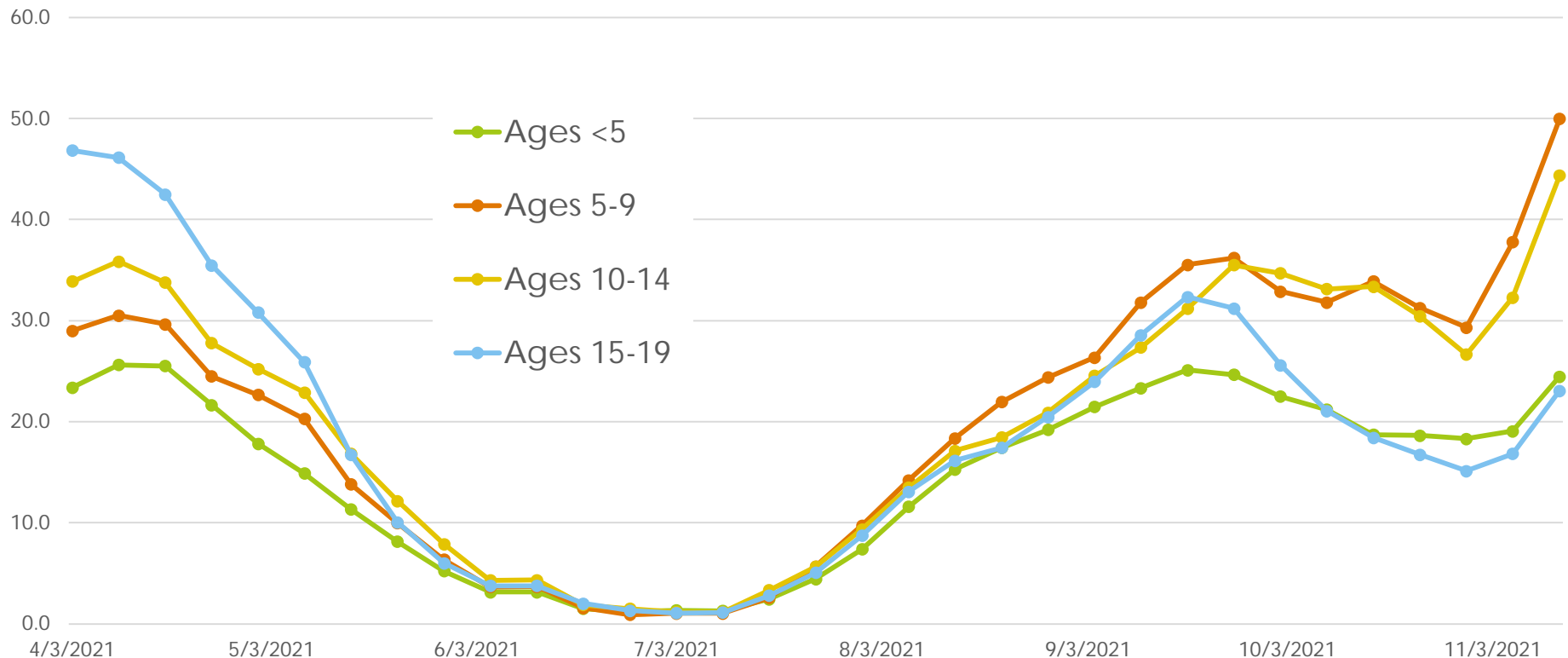


<i>Nationwide</i> estimates from AAP/CHA	Pediatric Case Hospitalization Rate	Pediatric Case Fatality Rate
Most Recent	0.8%	0.01%
Last 12 Mos.	0.8% - 1.2%	0.01%

Data source: <https://www.mass.gov/info-details/covid-19-response-reporting>; <https://www.aap.org/en/pages/2019-novel-coronavirus-covid-19-infections/children-and-covid-19-state-level-data-report/>

Trends: 0-19 Year-Old Age Cohort (MA Statewide)

Avg. Daily Cases Per 100k Pop. in Age Range
(Trailing 2 Weeks)



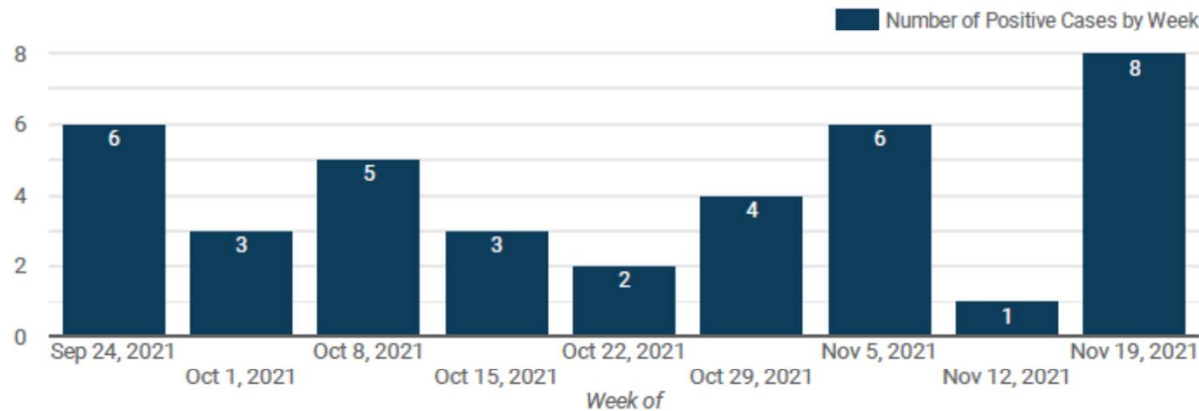
Data source: <https://www.mass.gov/info-details/covid-19-response-reporting>

COVID-19 CASES: DISTRICT DASHBOARD (SY2021-22)

Dashboard outlines number of positive COVID-19 cases in the PSB school community by week and learning model. For the purpose of this dataset, weeks run Friday to Thursday.

Source: Public Schools of Brookline School Health Services Department

Number of Positive Cases, by Week

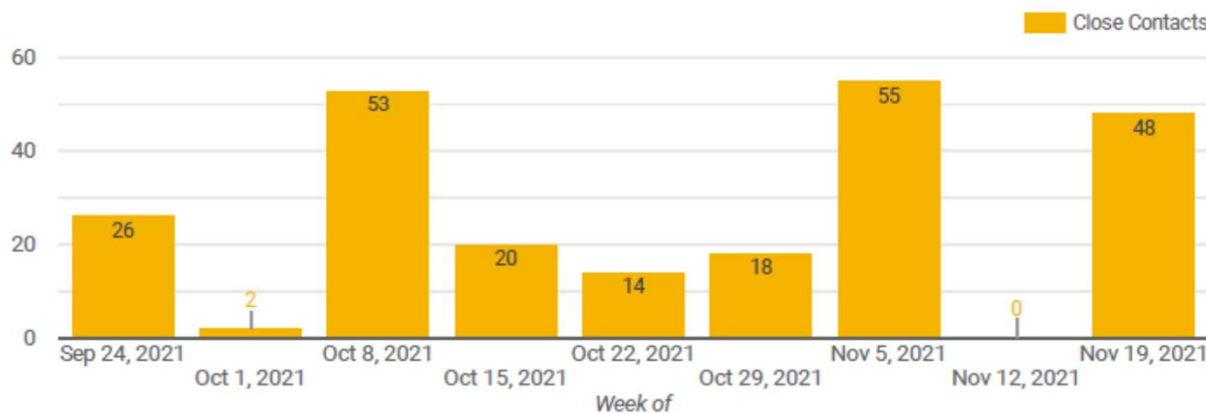


TOTAL PSB CASES TO DATE: 61

Students: 43
Staff: 18

Total cases among school-based students and staff: 61

Number of Close Contacts, by Week



TOTAL CLOSE CONTACTS*: 363 close contacts connected to 34 cases

Total positive cases with no close contacts* at school: 27

**Close contacts are defined as anyone has interacted with a COVID-19 positive individual under the following circumstances: The interaction must be indoors, within six feet of distance, lasted for a combined total of 15 minutes or more over a 24 hour period, and occurred within a 48 hour period before the individual tested positive/displayed symptoms for COVID-19.*

COVID-19 CASES: SCHOOL BY SCHOOL DASHBOARD (SY2021-22)

The table outlines the number of positive COVID-19 cases by week and the number of cumulative cases for the year at each school. For the purpose of this dataset, weeks run Friday to Thursday.
Source: Public Schools of Brookline School Health Services Department

Number of Positive Cases, by School & District Offices (Week of 11/12 - 11/18)

School/Building ^	Weekly Positive Cases	Cumulative Positive Cases	Weekly Close Contacts	Cases with Close Contacts
BEEP @ Beacon	0	0	-	-
BEEP @ Clark	0	0	-	-
BEEP @ Lynch	0	0	-	-
BEEP @ Putterham	0	0	-	-
Baker	1	9	7	1
Brookline High School	1	10	4	1
Driscoll	1	3	-	-
Florida Ruffin Ridley	1	5	-	-
Heath	0	12	-	-
Lawrence	0	5	-	-
Lincoln	1	4	4	1
Pierce	2	9	16	1
Runkle	1	4	17	1
Total	8	61	48	5

School/Building	Weekly Positive Cases	Cumulative Positive Cases	Close Contacts	Cases with Close Contacts
District Office	0	0	-	-

Chart source: <https://sites.google.com/psbma.org/psb-reopening-hub/dashboard>

COVID-19 CASES: GRADE LEVEL AND STAFF DASHBOARD (SY2021-22)

The table outlines the number of positive COVID-19 cases by week and the number of cumulative cases for the year at each school. For the purpose of this dataset, weeks run Friday to Thursday.
Source: Public Schools of Brookline School Health Services Department

Total Number of Positive Cases, by Grade Level and Staffing (Week of 11/12- 11/18)

Grade Level	Weekly Positive Cases	Cumulative Positive Cases
BEEP/Pre-K	0	0
Kindergarten	0	7
1st Grade	1	2
2nd Grade	1	6
3rd Grade	0	4
4th Grade	1	5
5th Grade	0	3
6th Grade	0	4
7th Grade	0	2
8th Grade	1	2
9th Grade	0	3
10th - 12th Grade	0	5
Staff (School-Based)	4	18
Staff (District Office)	0	0
Total	8	61

Holiday Gatherings and Travel

- PSB presently is deferring to state and federal guidance/rules.
- MA has no current COVID-specific travel restrictions. Public guidance focuses on fully vaccinated individuals and does not address others except to encourage vaccination.
- CDC's guidance can be found here:
 - Travel generally: <https://www.cdc.gov/coronavirus/2019-ncov/travelers/index.html>
 - Domestic travel: <https://www.cdc.gov/coronavirus/2019-ncov/travelers/travel-during-covid19.html>
 - International travel: <https://www.cdc.gov/coronavirus/2019-ncov/travelers/international-travel-during-covid19.html>
 - Holiday celebrations: <https://www.cdc.gov/coronavirus/2019-ncov/daily-life-coping/holidays/celebrations.html>

Source: <https://www.mass.gov/info-details/covid-19-travel>;